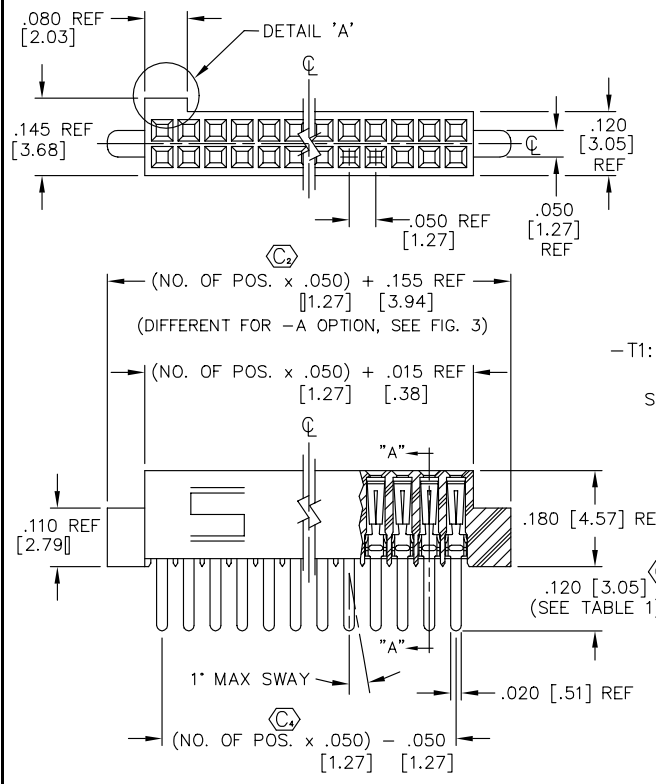


DO NOT SCALE FROM THIS PRINT

UNLESS OTHERWISE NOTED

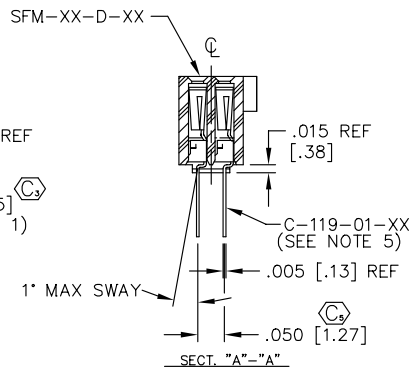
DIMENSIONS ARE IN INCHES		TOLERANCES ARE:
ONE PLACE DECIMALS ± .1	THREE PLACE DECIMALS ± .005	ANGLES ± 2°
TWO PLACE DECIMALS ± .01	FOUR PLACE DECIMALS ± .0020	



- NOTES:
1. MIN. PUSHOUT FORCE: .5 lb.
 2. COPLANARITY: .004=POS 05 THRU 26
.006=POS 27 THRU 50
 3. (C) REPRESENTS CRITICAL DIMENSION
 4. TUBE ALL POSITIONS.
 5. PINS CAN BE ORIENTED IN ANY DIRECTION; BOTH ROWS MUST FACE SAME WAY.
 6. SEE NOTCH FOR PROPER ORIENTATION.

FIG. 1

-T1: THROUGH HOLE/STRAIGHT MODIFIED

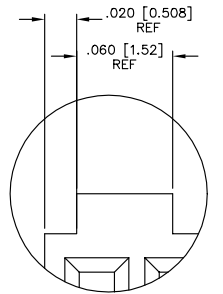


SFC-1XX-XX-XX-D-XX

- NO. OF POSITIONS
 ALL POSITIONS AVAILABLE
 -5 THRU -50
 USE BODY: (SFM-XX-D-XX)
- LEAD STYLE
 -T1: THROUGH HOLE (PHOS BRONZE)
 USE CONTACT: (C-119-01-XX)
 (SEE FIG. 1, SHT. 1)
 -T2: SURFACE MOUNT (PHOS BRONZE)
 USE CONTACT: (C-119-02-XX)
 (SEE FIG. 2, SHT. 1)
- PLATING SPECIFICATION
 -F: FLASH SELECTIVE GOLD
 -L: LIGHT SELECTIVE GOLD
 -FM: FLASH SELECTIVE GOLD/MATTE TIN TAILS
 -LM: LIGHT SELECTIVE GOLD/MATTE TIN TAILS
- OPTIONS
 (LEAVE BLANK FOR STANDARD AND USE SFM-XX-D)
 -A: ALIGNMENT PIN (USE SFM-XX-D-A)
 (SEE FIGURE 5, SHT. 2)
 -LC: LOCKING CLIP (SEE FIGURE 6)
 (USE (2) LC-05-TM & SFM-XX-D-LC)
 (AVAILABLE ON ALL LEADS)
 -TR: TAPE & REEL
 (SEE FIG. 4, SHT. 2)
 -K: POLYAMIDE FILM PAD (.005 [.13] THICKNESS WITH SILICONE ADHESIVE)
 (SEE FIG. 3) (USE K-500-300)
- BODY SPECIFICATION
 -D: DOUBLE ROW

TABLE 1

SUFFIX	TAIL LENGTH "A"	TAIL WIDTH "B"
-T1	.120 [3.05]	.020 [.51]



DIFFERENT AS SHOWN OTHERWISE SAME AS FIG. 1

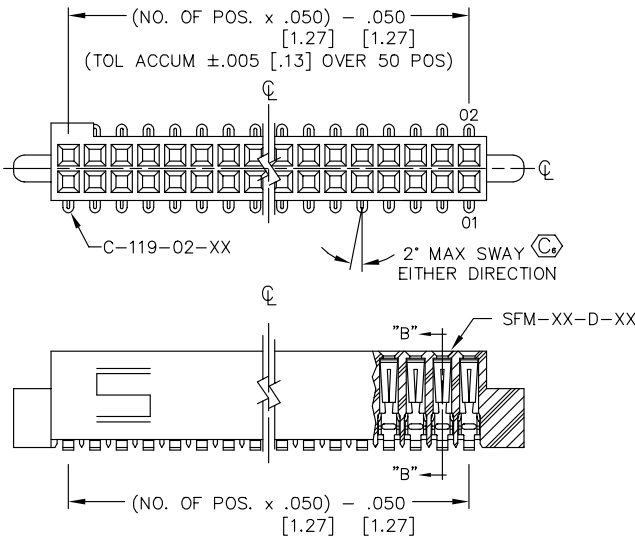


FIG. 2
 -T2: SURFACE MOUNT

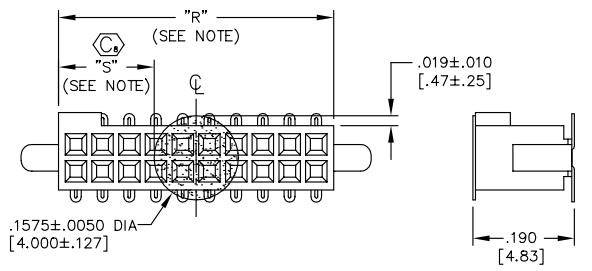
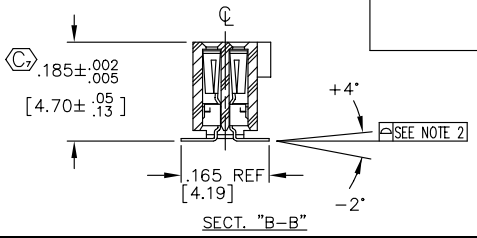


FIGURE 3
 -K: POLYAMIDE FILM PAD
 NOTE: "R" = USED MEASURED DIMENSION (REF)
 "S" = {("R" - .1575 [4.00]) / 2 } ± .020 [.51]



PROPRIETARY NOTE
 THIS DOCUMENT CONTAINS INFORMATION CONFIDENTIAL AND PROPRIETARY TO SAMTEC INC. AND SHALL NOT BE REPRODUCED OR TRANSMITTED TO OTHER DOCUMENTS OR DISCLOSED TO OTHERS OR USED FOR ANY PURPOSE OTHER THAN THAT FOR WHICH IT WAS OBTAINED WITHOUT THE EXPRESSED WRITTEN CONSENT OF SAMTEC INC.